



WALT DISNEY WORLD  
**DOLPHIN**



# Dolphin

The Dolphin holds our largest venues and most amount of guest rooms in one building. It's impressive 1,514 guest rooms are located just steps away from our 268,000 sq ft of meeting spaces.

The Dolphin has a total of 3 ballrooms, 52 meeting rooms, 1 exhibit space, and over 128,000 sq ft of outdoor space. The Dolphin is home to 11 restaurants and lounges as well as 114 well appointed suites.



WALT DISNEY WORLD  
**DOLPHIN**



**1,514**  
guest rooms



**52**  
meeting rooms



**11**  
restaurants and lounges



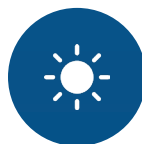
**268,000**  
sq ft of meeting space



**114**  
suites



**4**  
sparkling pools



**128,200**  
sq ft outdoor event space

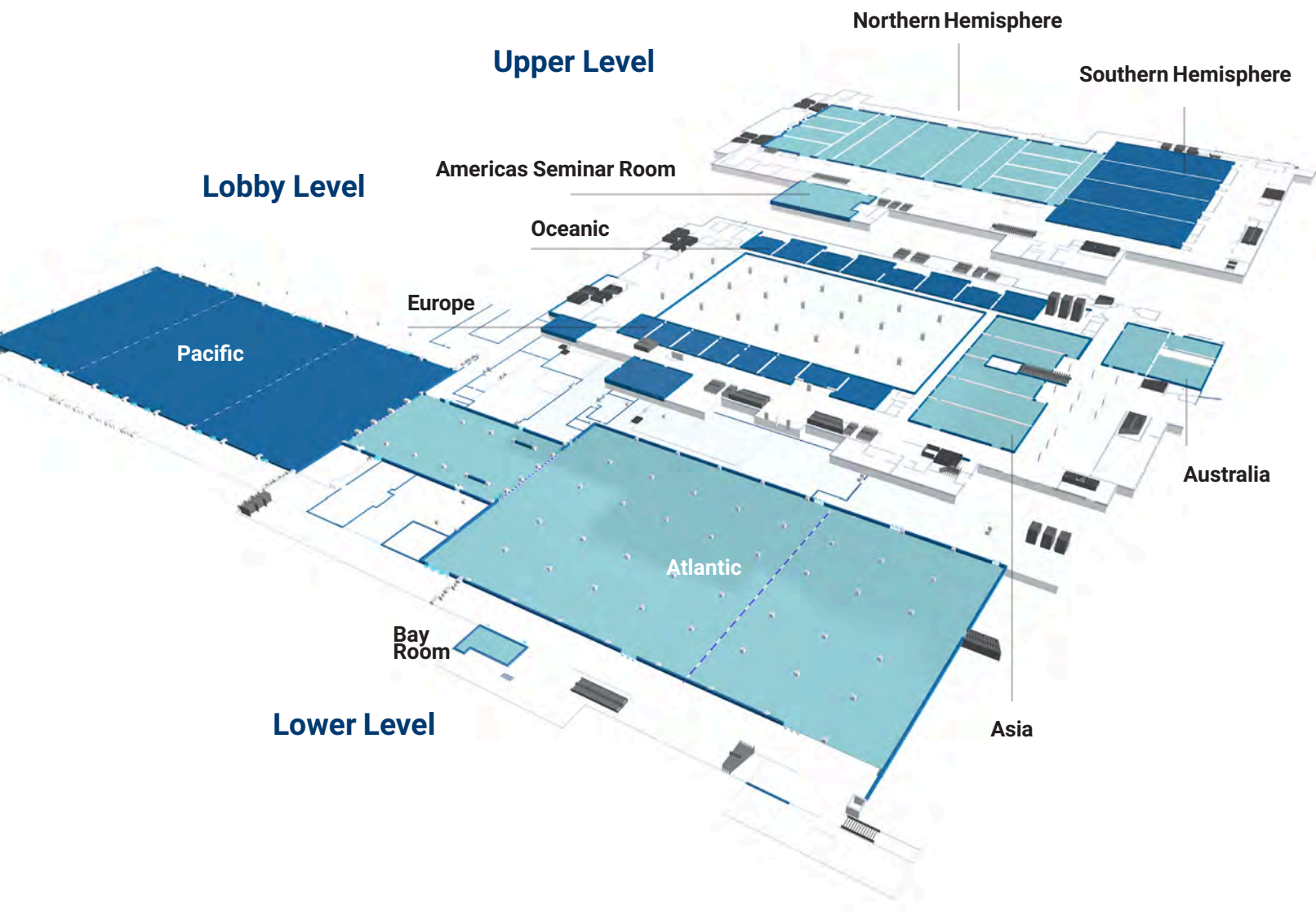


**3**  
ballrooms



**1**  
exhibit space







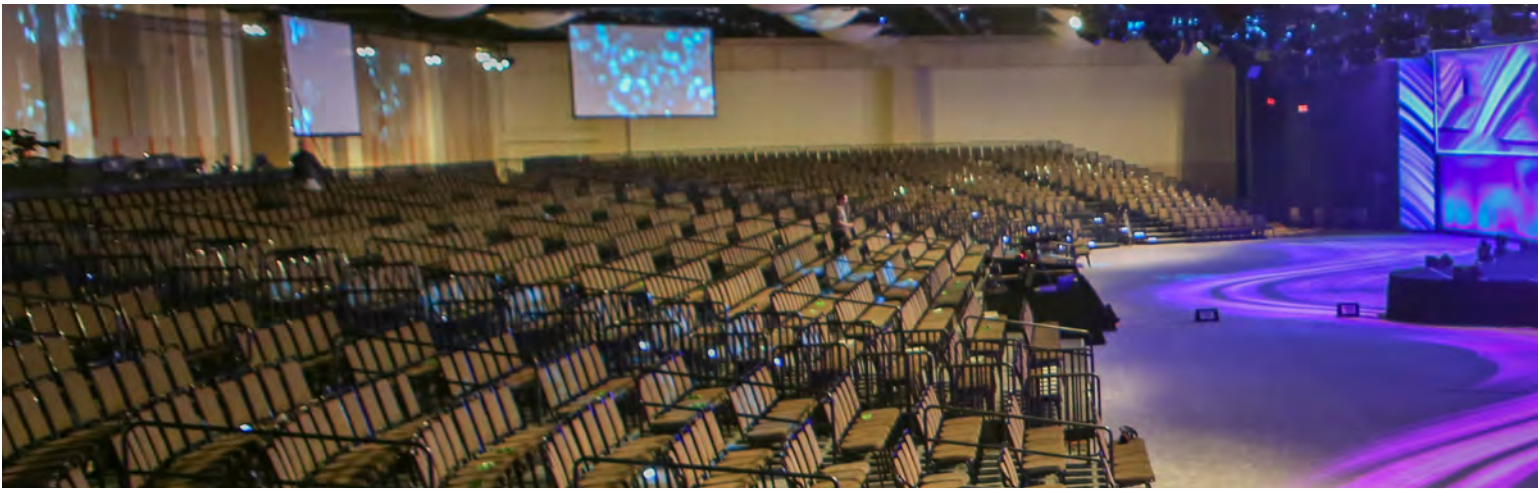




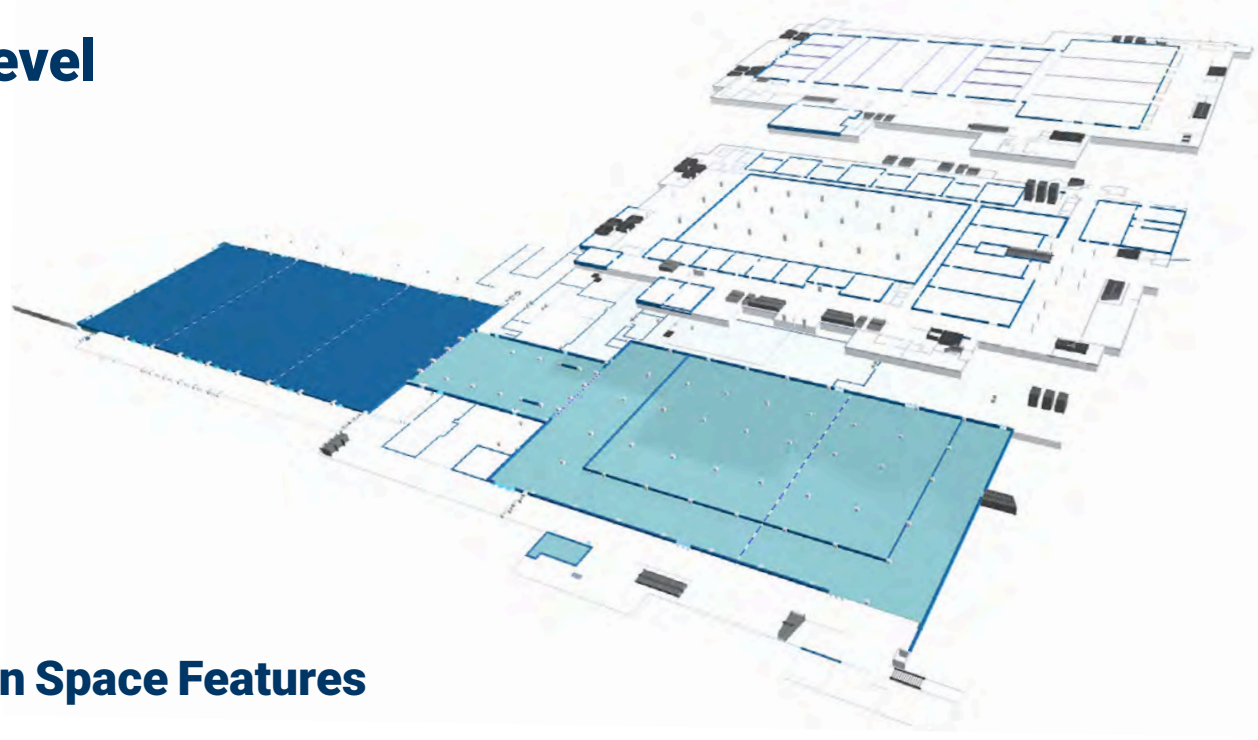


Causeway Event Party





# Lower Level



## Convention Space Features

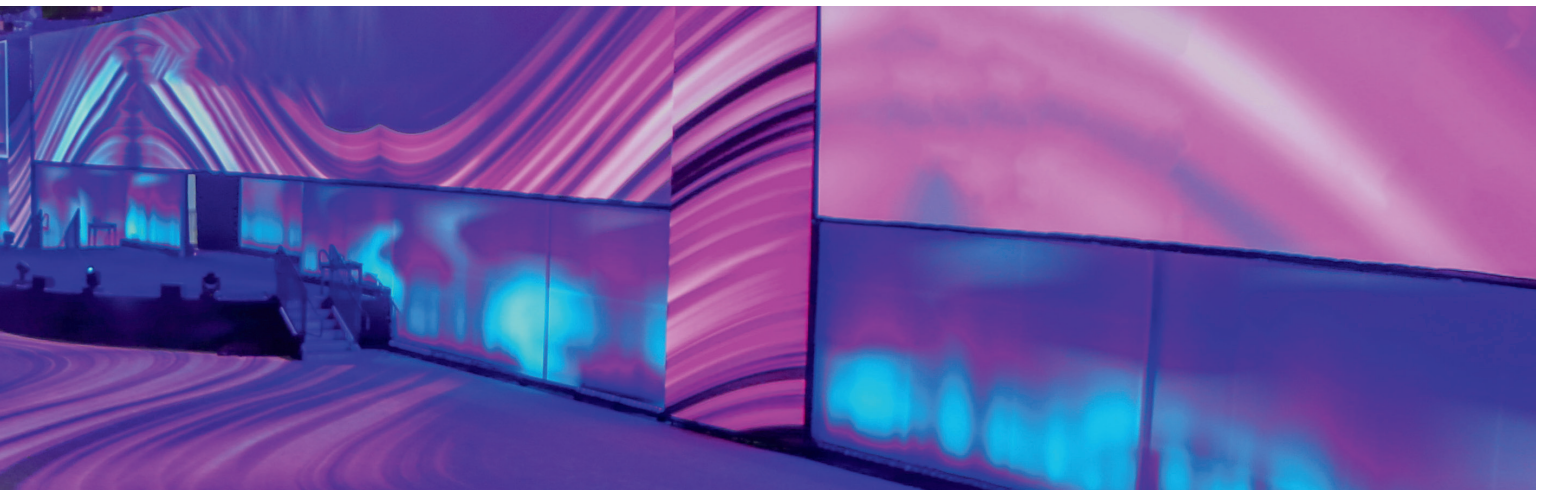
- Atlantic and Pacific are fully carpeted
- Electricity, telephone, networking, water and compressed air utilities are built into the Atlantic Hall columns; majority at 30' centers
- Electricity, telephone and networking utilities are built into the Pacific Hall floor; majority at 30' centers
- Programmable lighting
- Fully scalable and redundant internet service, delivered via our fiber-optic and Ethernet backbone, available throughout the space
- Drive-in freight elevator: 23'L x 10'W x 12'H; load limit: 12,000 lbs.
- Six hall-level loading docks; off-street load-in
- On-site audio/visual services department
- Convention network simulcast infrastructure managed by on-site technicians
- Meeting space offers multiple wired network ports and dedicated wireless access points
- Bay Room meeting room is fully securable and can be re keyed
- VOIP phone service available

### Atlantic Roll-Up Doors

Largest: 13' 6"W x 10' 6"H

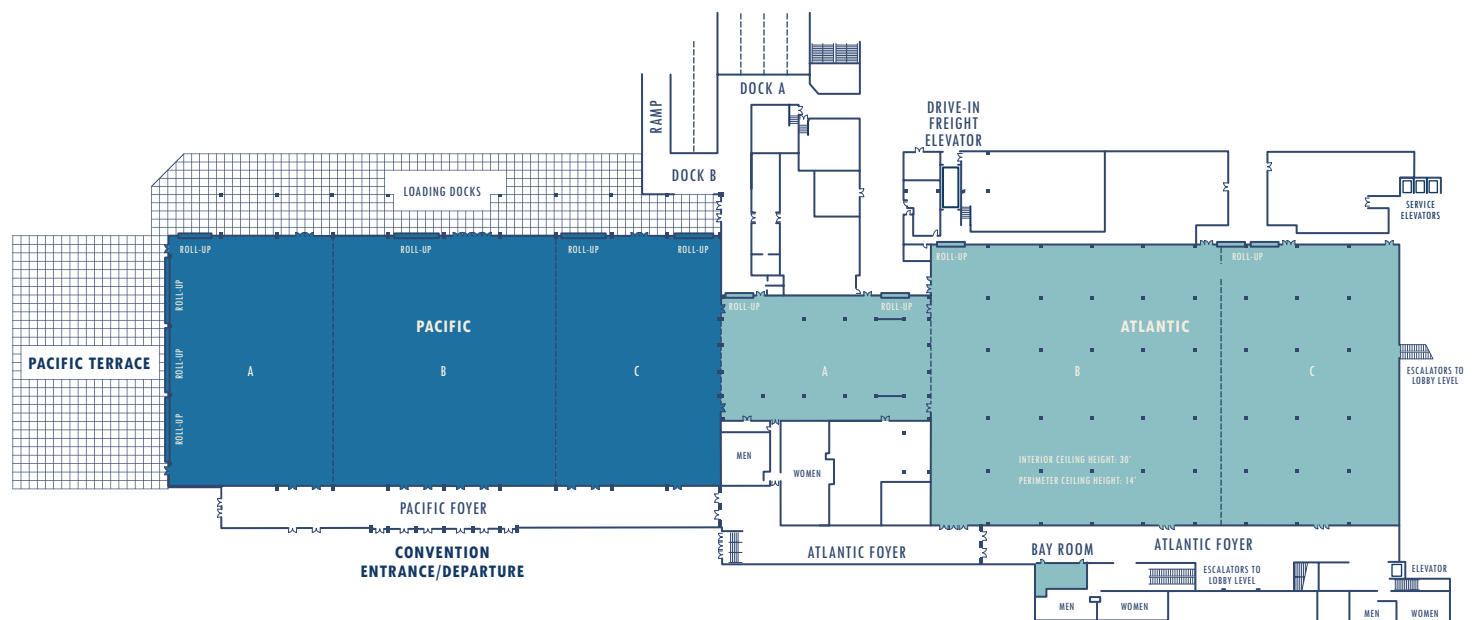
### Pacific Roll-Up Doors

Largest: 43'W x 21'H

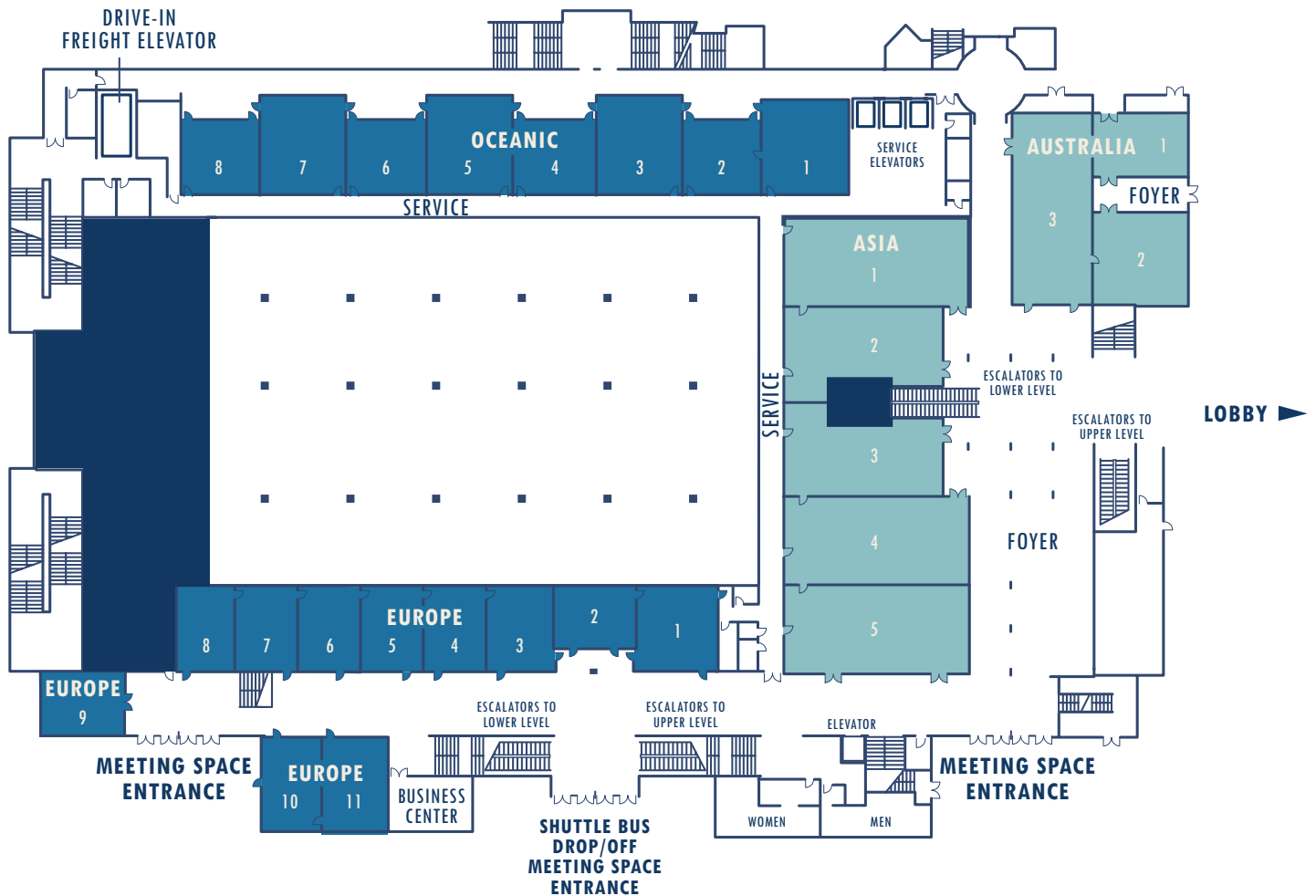


MEETING ROOM	SQ. FT.	LENGTH	WIDTH	CEIL. HT.	LOW PT.	8' x 10'	10' x 10'	THEATRE	SCHOOL	CONF	BANQUET.	RECEPT
<b>Atlantic/Pacific Halls</b>	<b>110,495</b>	-	-	-	-	<b>617</b>	<b>512</b>	-	-		<b>5,792</b>	<b>10,741</b>
Pacific	49,920	320'	156'	25' 8"	23' 8"	276	211	4,993	2,982	-	2,788	4,993
Pacific A	14,976	156'	96'	25' 8"	23' 8"	81	64	1,498	863	-	846	1,498
Pacific B	19,968	156'	128'	25' 8"	23' 8"	101	97	1,997	1,118	-	1,170	1,997
Pacific C	14,976	320'	156'	25' 8"	23' 8"	71	64	1,498	1,170	-	846	1,498
Pacific Terrace	16,200	-	-	-	-	-	-	-	-	-	1,079	1,344
Atlantic	60,575	-	-	-	-	341	301	-	-		3,004	5,748
Atlantic A	9,300	124'	75'	12' 8"	12' 8"	28	28	620	405		480	620
Atlantic B	31,850	182'	175'	30'	14'	178	150	-	-	-	1,593	3,185
Atlantic C	19,425	175'	111'	30'	14'	111	95	-	-	-	930	1,943
Atlantic B/C	51,275	2,939	1,759	309	149	313	263	-	-	2,523	2,523	5,128
Bay Room	465	31'	15'	12' 4"	12' 4"	-	-	41	24	22	24*	-

Numbers shown and capacities are subject to change upon specific program requirements.  
Atlantic Hall Foyer is 11,977 sq ft with 1,198 reception capacity. Pacific Hall Foyer is 6,355 sq ft.



# Lobby Level



## Meeting Rooms Feature

- On-site audio/visual services department
- Covered Meeting Space Entrance: Shuttle Drop Off Location
- Fully scalable/redundant internet service available
- Convention network simulcast infrastructure managed by on-site technicians
- Meeting space offers multiple wired network ports and dedicated wireless access points
- All highlighted meeting rooms on Lobby Level are hard walled, fully securable, and can be re keyed
- Australia 1 & Australia 2 contain private single-stall restrooms
- All highlighted VOIP phone service available



# Lobby Level

MEETING ROOM	SQ. FT.	LENGTH	WIDTH	CEIL. HT.	LOW PT.	THEATRE	SCHOOL	H/S	U-SHAPE	CONF	BANQUET.	RECEPT
Oceanic 1	1,122	37'	29' 5"	11' 9"	10' 5"	104	70	42	33	30	70	160
Oceanic 2	772	29'	27' 1"	11' 9"	10' 11"	78	44	30	27	24	50	100
Oceanic 3	1,130	36' 10"	26' 11"	11' 9"	10' 5"	104	74	42	33	30	70	160
Oceanic 4	849	29' 9"	29'	11' 9"	11'	84	48	36	27	24	50	100
Oceanic 5	1,105	35' 10"	29' 5"	11' 9"	10' 5"	104	74	42	33	30	70	160
Oceanic 6	845	29' 7"	28' 11"	11' 10"	11' 1"	84	48	36	27	24	50	100
Oceanic 7	1,115	36' 11"	29' 3"	11' 9"	10' 4"	104	74	42	33	30	70	160
Oceanic 8	848	29' 9"	28' 11"	11' 9"	11'	84	48	36	27	24	50	100
Europe 1	869	30' 4"	29' 1"	11' 8"	10' 11"	70	48	36	27	24	50	100
Europe 2	806	31' 7"	26' 2"	11' 5"	11'	64	44	36	27	24	50	100
Europe 3	740	30' 4"	24' 11"	11' 8"	10' 11"	72	40	36	27	24	50	75
Europe 4	703	31' 7"	22' 10"	11' 7"	10' 11"	60	48	36	30	24	50	75
Europe 5	736	32' 8"	23' 1"	11' 8"	11'	66	45	36	30	24	50	75
Europe 6	700	29' 11"	23'	11' 9"	10' 11"	60	42	36	30	24	50	75
Europe 7	690	31' 1"	22' 8"	11' 9"	11' 1"	66	42	36	30	24	50	75
Europe 8	706	32' 9"	21' 7"	11' 10"	11' 1"	65	45	30	30	24	50	75
Europe 9	644	30' 10"	21' 3"	11' 9"	11'	68	43	30	24	24	50	75
Europe 10	732	33' 5"	22' 1"	11' 8"	10' 11"	65	45	30	30	24	50	75
Europe 11	751	32' 6"	23' 3"	11' 8"	11'	65	45	30	30	24	50	75
Asia 1	2,241	70' 9"	32' 1"	11' 5"	10' 6"	239	160	72	63	60	160	300
Asia 2	1,772	59' 10"	27' 4"	11' 8"	9' 5"	169	104	60	51	48	110	260
Asia 3	1,769	59' 10"	27' 2"	11' 9"	9' 5"	162	104	60	51	48	110	260
Asia 4	2,259	70' 6"	32' 5"	11' 5"	10' 5"	228	159	72	63	54	160	300
Asia 5	2,282	70' 7"	31' 2"	11' 5"	10' 11"	222	141	72	63	60	130	300
Australia 1	696	33' 9"	21' 3"	11' 5"	8' 8"	—	—	—	—	16	—	—
Australia 2	1,131	35' 11"	32' 6"	9' 2"	8' 1"	106	61	42	30	24	70	120
Australia 3	2,184	75' 8"	29' 1"	12' 2"	10' 2"	234	140	78	69	66	140	300
Foyer	8,910	—	—	—	—	—	—	—	—	—	—	—

Numbers shown assume maximum capacities and are subject to change upon specific program requirements.

\* Boardroom features permanent table.











Hemisphere Ballroom

# Upper Level

MEETING ROOM	SQ. FT.	LENGTH	WIDTH	CEIL. HT.	LOW PT.	THEATRE	SCHOOL	H/S	U-SHAPE	CONF	BANQUET.	RECEPT
Hemispheres Ballroom	54,238	351' 10"	199' 10"	27' 4"	22' 2"	6,020	3,645	-	-	-	3,540	5,424
Northern Hemisphere	33,556	244' 11"	137' 8"	27' 4"	22' 2"	3,725	2,736	-	-	-	2,310	3,356
A/B/C/D	24,402	137' 8"	71' 4"	22' 2"-27' 4"	22' 2"	1,494	892	-	-	-	900	2,210
B/C/D/E	24,689	137' 8"	73' 7"	22' 2"-27' 4"	27' 4"	-	-	-	-	-	-	-
Salon A	6,672	137' 8"	48' 2"	22' 2"	22' 2"	680	432	-	-	-	440	1,080
Salon A1	1,672	48' 2"	34' 8"	22' 2"	22' 2"	208	112	54	45	36	120	285
Salon A2	1,664	48' 2"	33' 8"	22' 2"	22' 2"	208	112	54	45	36	120	285
Salon A3	1,664	48' 2"	33' 8"	22' 2"	22' 2"	208	112	54	45	36	120	285
Salon A4	1,672	48' 2"	34' 8"	22' 2"	22' 2"	208	112	54	45	36	120	285
Salon B	4,343	137' 8"	31' 9"	27' 4"	27' 4"	-	-	-	-	-	-	-
A/B Corridor	2,191	137' 8"	15' 11"	27' 4"	22' 2"	-	-	-	-	-	-	-
Salon B + A/B Corridor	6,534	137' 8"	47' 8"	27' 4"	22' 2"	814	480	-	-	-	460	1,130
Salon C	6,493	137' 8"	47' 8"	27' 4"	27' 4"	814	460	-	-	-	460	1,130
Salon D	4,343	137' 8"	31' 8"	27' 4"	27' 4"	-	-	-	-	-	-	-
D/E Corridor	2,214	137' 8"	16' 1"	27' 4"	27' 4"	-	-	-	-	-	-	-
Salon D + D/E Corridor	6,557	137' 8"	47' 9"	27' 4"	27' 4"	814	460	-	-	-	460	1,130
Salon B/C/D	15,179	137' 8"	111' 7"	27' 4"	27' 4"	2,030	1,012	-	-	-	990	2,520
Salon B/C	10,836	137' 8"	79' 7"	27' 4"	27' 4"	1,482	800	-	-	-	660	1,650
Salon C/D	10,836	137' 8"	79' 6"	27' 4"	27' 4"	1,482	800	-	-	-	660	1,650
Salon E	7,296	137' 8"	53' 3"	22' 2"	22' 2"	844	472	-	-	-	480	1,280
Salon E1	1,841	53' 3"	34' 8"	22' 2"	22' 2"	210	126	60	51	42	120	285
Salon E2	1,841	53' 3"	34' 8"	22' 2"	22' 2"	210	126	60	51	42	120	285
Salon E3	1,841	53' 3"	34' 8"	22' 2"	22' 2"	210	126	60	51	42	120	285
Salon E4	1,841	53' 3"	34' 8"	22' 2"	22' 2"	210	126	60	51	42	120	285
N/S Corridor	1,801	137' 8"	13' 1"	22' 2"	22' 2"	-	-	-	-	-	-	-
Salon E + N/S Corridor	9,097	137' 8"	66' 4"	22' 2"	22' 2"	1,110	600	-	-	-	550	1,350
Nothern Foyer	14,400	-	-	-	-	-	-	-	-	-	-	1,440
Southern Hemisphere	18,881	199'	92' 5"	22' 2"	22' 2"	2,096	909	-	-	-	1,200	1,888
Salon I	4,719	92' 5"	49' 3"	22' 2"	22' 2"	504	320	108	93	78	310	775
Salon II	4,793	92' 5"	51' 1"	22' 2"	22' 2"	528	320	108	93	78	320	775
Salon III	4,767	92' 5"	50' 8"	22' 2"	22' 2"	528	320	108	93	78	320	775
Salon IV	2,315	48' 11"	45' 8"	22' 2"	22' 2"	231	135	66	51	36	150	375
Salon V	2,287	48' 11"	45' 5"	22' 2"	22' 2"	220	135	66	51	36	150	375
Salon IV/V	4,602	92' 5"	48' 11"	22' 2"	22' 2"	480	300	108	93	78	310	775
Americas Seminar Room	2,822	63' 9"	45' 5"	11' 8"	10'	300	197	78	60	48	190	475
Southern Foyer	11,600	-	-	-	-	-	-	-	-	-	-	1,160

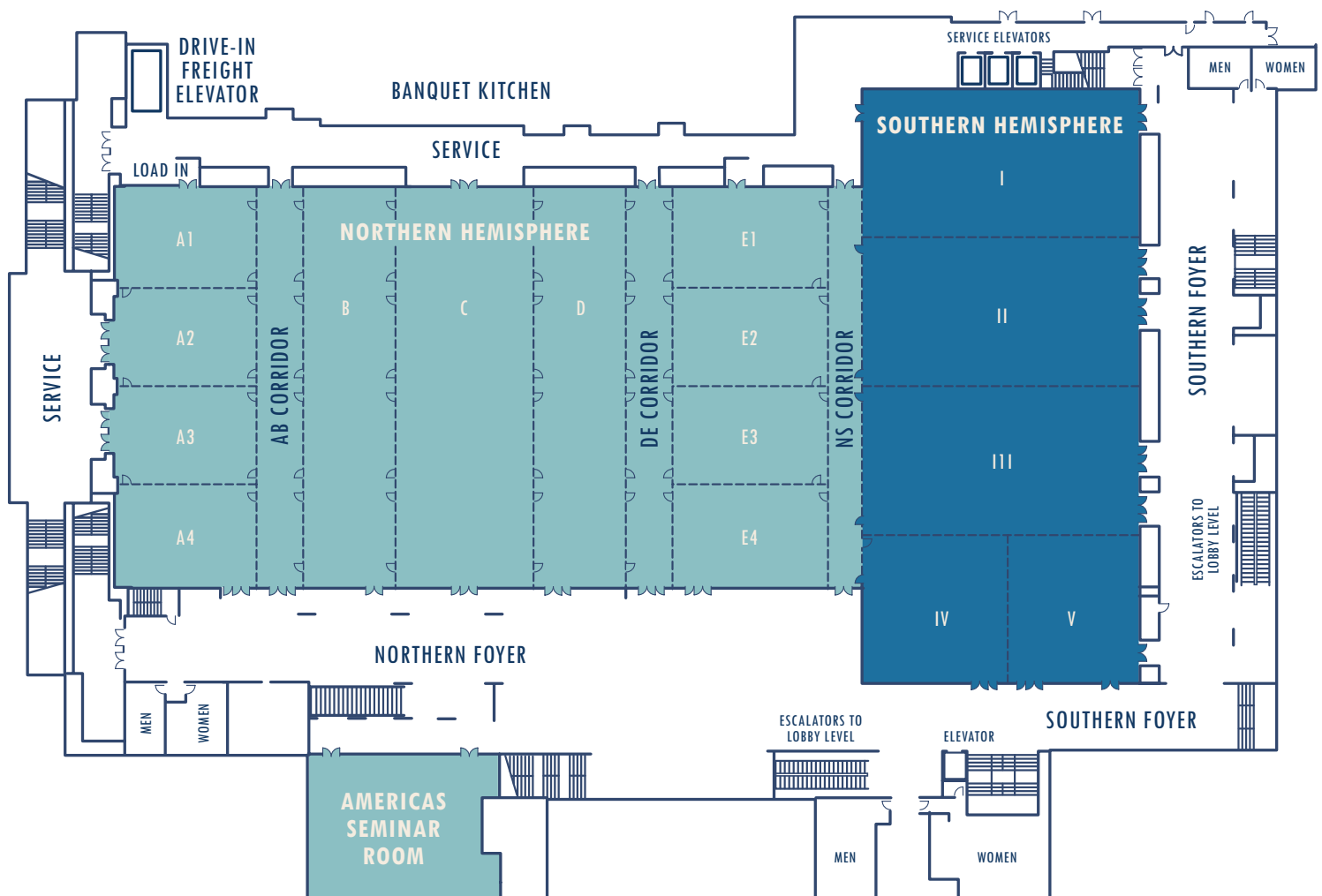
Numbers shown assume maximum capacities and are subject to change upon specific program requirements. N/S Corridor footage included in Hemispheres Ballroom information.



# Upper Level

## Ballrooms Feature

- Programmable lighting and hang points in ceiling
- Extensive ventilation system permitting indoor pyrotechnics
- Drive-in freight elevator: 23'L x 10'W x 12'H; load limit: 12,000 lbs.
- Salon B and Salon D in the Hemispheres Ballroom cannot stand alone
- On-site audio/visual services department
- Fully scalable/redundant internet service available
- Convention network simulcast infrastructure managed by on-site technicians
- Meeting space offers multiple wired network ports and dedicated wireless access points
- Americas Seminar meeting room can be fully securable and re keyed
- VOIP phone service available



## Level 12 - Premier Suite



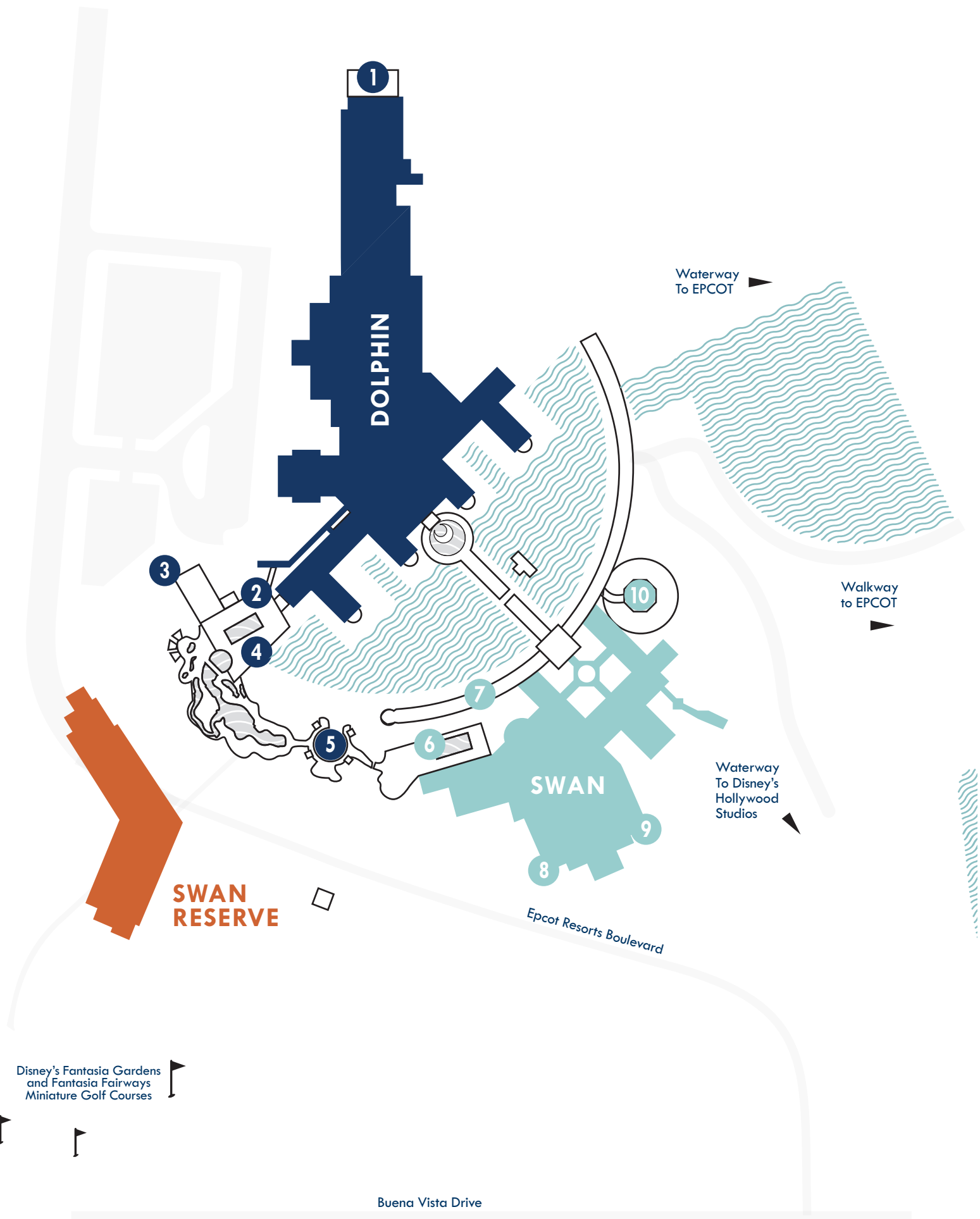
### Premier Suite Features

- Conference table seating for 14+
- 85-inch LCD monitor and upgraded A/V system
- Full room audio system with integrated speakers
- Room divisible by hand-carved Italian teak wood doors
- Windows to allow for more natural light
- Buffet counter and hospitality bar
- Separate service entrance
- On-site audio/visual services department
- Fully scalable/redundant internet service available
- Convention network simulcast infrastructure managed by on-site technicians
- Meeting space offers multiple wired network ports and dedicated wireless access points
- Premier Suite is fully securable and can be re keyed
- VOIP phone service available

MEETING ROOM	SQ. FT.	LENGTH	WIDTH	CEIL. HT.	LOW PT.	CONF	RECEPT
Premier Suite	1,102	66'	16' 7"	8'	6' 11"	14	65









# Outdoor Spaces

OUTDOOR SPACES		SQ. FT.	BANQUET.	RECEPT
1	Pacific Terrace	16,200	1,300	1,620
2	Dolphin Lap Pool Deck	6,000	250	300
3	Cabana Deck	7,500	400	500
4	Dolphin Lap Pool Deck	3,500	150	200
5	White Sand Beach	24,000	850	1,000
6	Swan Lap Pool Deck	3,500	300	500
7	Lake Terrace	17,280	800	1,000
8	Osprey Terrace 1	2,800	120	150
9	Osprey Terrace 2	2,800	120	150
10	Crescent Terrace	4,000	120	200



Crescent Terrace



Osprey Terrace









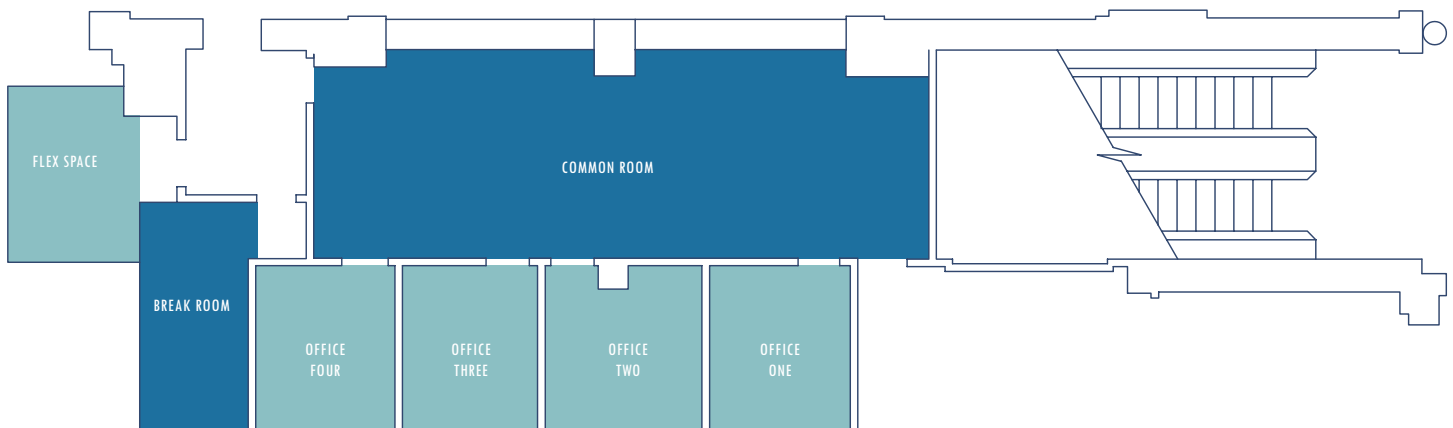


# Lobby Level - Atlantis

## Atlantis Features

- 1 Large community room (approximately 36'x14')
- Banquet equipment set to client/group needs:  
(Conference Table for 16, Rounds of 8, etc.)  
Standard set will be Conference for 16 unless otherwise directed
- Enhanced/upgraded banquet chairs
- Existing wall mounted TV/Monitor
- Wall mounted white board
- 4 wall mounted pin boards
- 4 Private offices (each approximately 11'x10')
  - Each set with adjustable standing desk, office chair, accent chairs, beanbag chair, storage cabinet, lighting, artwork, and décor
- 1 Break room (approximately 15'x8')
- Set with 2 rounds of 4
- 1 large refrigerator
- 1 Flex room (approximately 13'x7') - Clean and clear for storage/materials

The above-mentioned office furniture will be set at all times. This equipment is permanent to the space.





## Notes:

This image shows a single page from a notebook or ledger. It features ten evenly spaced, light blue horizontal lines across its entire width. The lines are thin and consistent in color. There is no handwriting, printed text, or other markings on the page. The background is a uniform off-white or very light cream color.